



2013 H-3 45' Quad SLIDE

VIN: 1453

FACTORY-INSTALLED EQUIPMENT (Chassis)

- Double Factory Installed Slideouts (All Electric)
- High Intensity Xenon® Headlights
- Fog Lights
- Ramco® Remote Heated Rearview Mirrors: w/Separate Convex Top (Chromed)
- Central Electrical Door Locking System
- Remote Keyless Locking Entrance Door
- Remote Keyless Locking Compartment Doors
- Euro/American Tow Package (20,000 lbs)
- Trailer Air Brake Connection
- Low Fuel Warning Light
- Cornering and Docking Lights
- Courtesy Lights Blinker Switch
- Compartment's and Engine Lighting
- Back-Up Alarm
- Headlamp Cleaning System

POWERTRAIN (Chassis)

- Detroit® DDEC VI, 515HP Series 60 w/5YR/250,000 PP
- Allison® World 4000 MH, 4th Generation: 6-Speed Automatic Transmission (5 yr Warranty)
- Allison® Hydraulic Transmission Retarder
- Cruise Control
- Pneumatic Drive Belt Tensioners
- Turbo-Boost Gauge
- 3-Speed Engine Cooling Fan
- Engine Coolant Filter
- Block Heater
- Racor® Fuel Separator

TIRES/WHEELS (Chassis)

- Michelin® 315/80R22.5 (Drive Axle)
- Michelin® 365/70R22.5 (Front & Tag Axles)
- Aluminum Rims 22.5"x9" (Drive Axle)
- Aluminum Rims 22.5"x10.5" (Front and Tag Axles)

BRAKES (Chassis)

- Prevost Electronic Stability Program
- All Wheel Disc w/ABS Type 27
- Front Wheel Brake Boosters Type 24-24
- Drive Wheel Brake Boosters Type 14-16
- Tag Wheel Brake Boosters
- Parking Brake Booster on Tag Wheels

GENERAL (Chassis)

- Overall Length 45'
- Wheelbase 316.12"
- Overall Width 102"
- Overhang (Incl. Bumper) - Front 75"
- Overhang (Incl. Bumper) - Rear 107"
- Fuel Tank (US Gal) 235 with Fuel Fill Both Sides
- Gross Vehicle Weight Rating (lbs) 54,500

STEERING/SUSPENSION (Chassis)

- Tilt and Telescopic Steering Wheel
- ZF Servocomtronic Variable Power Steering
- Independent Suspension System with Lift Tag Axle
- Steering Slave Cylinder & Front Drive Axle Sway Bars
- Integrated Pneumatic Level, Low Leveling System
- ELECTRICAL SYSTEM (Chassis)
- Fully Multiplexed Electrical System
- 12v Exterior Lighting
- 24v/270amp Additional Alternator
- Shell Alternator (w/Full AC) Dual Delco 24v/75amp
- EXTERIOR
- Custom Painted Graphics w/Super Clear Coat
- 4 Roof Mounted Power Awnings and Wind Sensors

- w/Front and Rear Cowlings
- Roof Mounted Air Horns
- Stainless Steel Bump Rail Package with Lighting
- Mud Flaps w/Weights and Stainless Steel Trim
- Custom Fiberglass Fenders
- Auto Leveling System
- Docking Lights
- Bay Entertainment Center
- Bay Areas are Carpeted, Stainless Steel or Acrylic
- Electric Slide-out Trays in Storage Bay
- 4 ZipDee® Chairs in Custom Built Storage
- Utility Bay Soap and Towel Dispensers
- Slide out Grill

DASH/ENTRY

- Custom Upholstered Dash
- Illuminated Dash Panel
- Custom Interior Entry Door Panel
- Entrance Doorbell and Camera
- Electric Privacy Shades for Driver and Passenger Windows: with controls located at Driver and Passenger Area
- ISRI® Air Ride Driver Seat Heated and 6-Way Power
- Passenger Seat Heated, 6-Way Power with Power Foot Rest
- Electric Step Well Cover - Switched at Driver and Passenger Area
- 40 Channel Cobra® CB Radio
- Air compressor switch-awning switches-ground effects switch
- Navigation System :
- Color Backup Camera with Quad Screen Capability
- Side Mounted Cameras
- XM / AM / FM / CD Player
- Passenger 5.5 7V GPS Monitor/TV on Passenger Side:
- Satellite and DVD Player

Air Conditioning & Heating

- 4 Low Profile 13,500 BTU Roof Air Conditioners: with Heat Pumps and Dual Control Modules

- 50,000 BTU Diesel Fired Boiler-Hydronic System
- 3 Interior Heat Zones, 1 Utility Bay
- Electric Heating Element for Low Demand Periods
- 7 Heat Exchangers
- Audio - Visual
- Blue Ray DVD and Surround Sound in Salon/Bedroom/Bay Entertainment
- Electric TV Antenna
- Two In Motion Satellites
- Receivers in Salon - Bedroom - Entertainment Bay
- 32" HD LED Television in Entertainment Bay
- 47" HD LED Television Entrance
- 26" HD LED Television in Slide-out
- 42" HD LED Television in Bedroom
- 55" HD LED Television Front Salon on Lift
- Crestron System®:
- 2-RF Remote Touch Screen Controls
- Operates: Audio/Visual in Salon, Bedroom and Entertainment Bay, XM / AM/ FM / CD Player
- Blue Ray DVD Player
- Window Shades
- Lighting
- Entertainment Bay Components:
- 32" LED-HDTV
- AM/FM/CD, Blue Ray DVD & I-Pod®
- Satellite Receiver

Electrical

- 12v Maintenance Free Starting Battery
- (1) 40 amp 24v Charger for Main Engine Batteries with Dash Switch
- 75 amp 24v Alternator for Main Engine Batteries
- (2) 270 amp 24v Alternator for House Batteries
- 50 amp Automatic Power Transfer Between Generator and Shoreline with Generator Priority with Manual Bypass
- 50 amp Breaker Panel for Generator and Shoreline
- 8-12v Deep Cycle 6D Lifeline 290 amp. Hr. Batteries

Inverters (14,000 kw) will Operate:

- Front and Rear Air Conditioners
- Televisions/Entertainment Systems
- AC Receptacles
- Convection Oven
- Refrigerator

Power Management System which Monitors:

- AC and Battery Voltage
- Holding Tank Levels
- Generator Operation with Generator Slide-out Tray (for service)
- Weather Station
- Auto Water Fill and Coach Monitor
- 20kw Kohler® Diesel Generator:
- Stainless Steel Exhaust Extension - Routed to Rear of Coach
- Sound Deadening Package
- Air Bag Suspension
- Auto Start System

Plumbing

- 143 Gallon Fresh Water Tank
- 130 Gallon Total Holding Tanks - 80 Gallon Gray Water & 50 Gallon Black Water

- Water Filtration System with Reverse Osmosis at Galley Drinking Spout
- Driver Side Automatic Electric Dump Valves for Gray and Black Tanks

- 20 Gallon Electric Water Heater: w/ Winterization System and Motor-Aide
- Headhunter® Mach 5 Water Pump with Accumulator Tank
- 12 volt Water Pump (backup)
- Ceiling, Windows & Wall Treatments
- Automatic Shades with custom Treatments on All Windows
- Ceiling Material: Suede
- Wall Material: Suede
- Designer Tile Backsplash in Kitchen
- Solid Surface Window Sills
- Designer Vanity Backsplashes in Bathroom
- Designer Accent Tile in Bathroom

Interior Lighting

- Halogen and LED Ceiling Lighting with Variable Control
- Halogen and LED Cabinet Down Lighting with Variable Control
- Accent and Aisle Lighting throughout Interior
- Custom Window Lighting throughout Interior
- Reading Lights in Bedroom

Salon/Galley

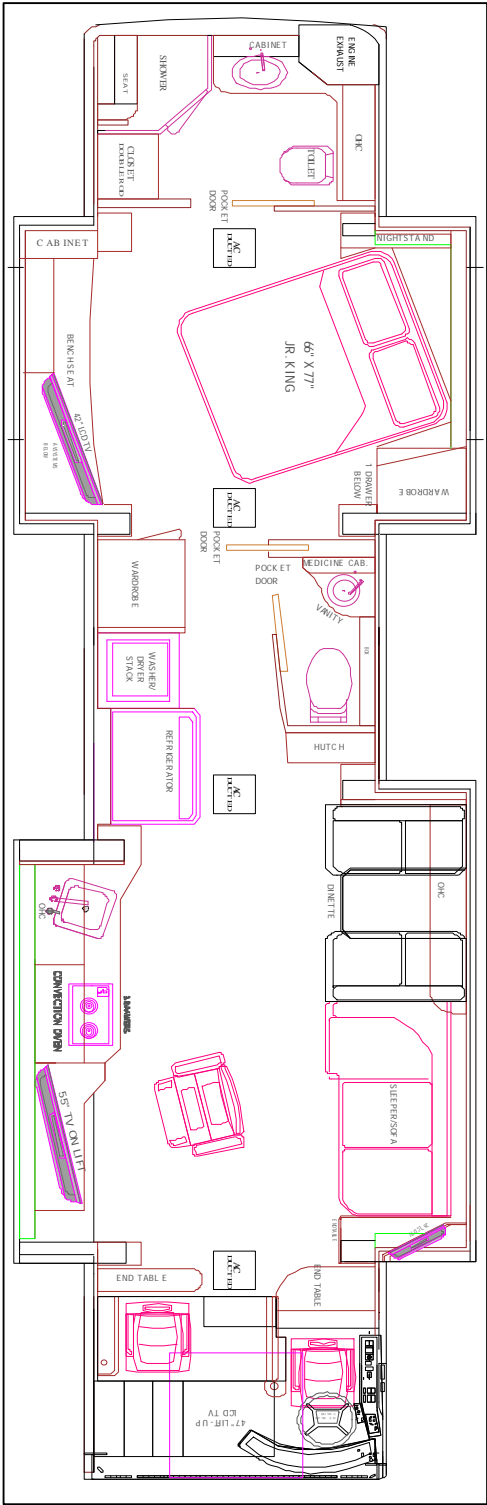
- Custom Sofa, Dinette and Euro Recliner
- Designer Throw Pillows
- Solid Surface Countertops
- Custom Corian and Tile Backsplashes
- Custom Crown and Chair Rail Moldings
- Designer Kitchen Sink and Custom Faucets
- Sink Cover Storage in Cabinet
- Stainless Steel Refrigerator
- 2-Burner Cooktop Recessed with Cover
- Dishwasher Drawer
- Convection Oven
- Stackable Washer and Dryer
- Automatic Custom Window Covering
- Electric Operated Pocket Doors with Emergency Override
- Custom Tile Floors with Electric Heat throughout interior

Bathroom

- Custom Sinks
- Custom Chrome Faucets
- Custom Shower Walls with Seat and Shampoo Caddy
- Pressure Balanced Shower Valve with Slide Bar
- Bath Accessory Package
- Two Toilets
- 2-Vent Fans

Bedroom

- Automatic Blackout Shades
- Quilted Bedspread with Designer Pillows
- Jr. King 66" X 77"
- Safe



MSRP: 1,920,896

While every effort is made to assure this information to be accurate, variations in the manufacturing process and dealer installed accessories may cause this window sticker display to vary from that on the vehicle. Check with your dealer for complete information. Does not include Dealer installed options and accessories, local taxes or license fees.